

Marine Surveyors, Investigators & Claims Settling Agents

Todd & Associates, Inc.

2390 Shelter Island Drive Suite 220
San Diego, CA 92106

TODD & ASSOCIATES, INC.
MARINE SURVEYORS, CLAIMS SETTLING AGENTS & INVESTIGATIONS

STOLEN VESSEL

2005 Nortech 4300 Vee & 2005 Myco Trailer

* Hull: Yellow, orange fade; white & white graphics - custom paint

- Upholstery: White
- Canvas: Blue cockpit cover
- Closed bow
- Livorsi platinum gauges



• Engine: T/1000 565cc Quad Rotors by Teague
Custom Marine w/#6 Drives

• Eng Sr #'s: TCM564948, TCM564949

• Engine hatch cover: White w/"Nor-Tech"

• Trailer: 2005 Myco aluminum triple axle trailer,
MWA40-42XHTR

• Trailer VIN #: 4JFBA43375B006022

• TX Trailer License: 43 VEE

Vessel name: "Card Shark"
Paint on sides w/shark graphic
A 2005 TX (on transom)

HIN #: AOV43023J405

Documentation #: 1170242

LOCATION OF INCIDENT: Derebery Performance Marine
Highport Road, Pottsboro, TX 75076
DATE OF INCIDENT: November 23, 2007
POLICE AGENCY: Grayson County Sheriff (903) 813-4200
Report #: 314008

up to **\$50,000.00** **REWARD** up to **\$50,000.00**

A reward is being offered by various insurance company interests for information leading to the safe return and recovery of the above vessel. Reward amounts for information leading to the safe return and recovery of the vessel shall be determined based on the strength of information and shall be at the sole discretion of the carrier. Assured, relatives of assured, employees of entity offering reward, or law enforcement officials are ineligible for reward for recovery. With any information, call collect or immediately notify your local law enforcement agency.

TODD & ASSOCIATES, INC.
(800) 325-8061 or (619) 226-1895 Fax: (619) 223-8942
stolenboats@boatman.com http://www.boatman.com

November 27, 2007-07-1307 BSIS #21305
2390 Shelter Island Drive #220 San Diego, CA 92106 www.boatman.com

Damage Investigations & Stolen Boats

In 1996, Todd & Associates created an Internet site to post Stolen Vessels with Rewards. Currently, this Internet site averages 8,000+ visitors per day. Visitors to Todd & Associates' website have been identified primarily as law enforcement and the boating public. At the site, 'Wanted' posters may be viewed, downloaded, and printed. This two pronged approach of posting a stolen vessel on our Internet site, with simultaneous distribution of a telefacsimile, and Email blast, 'Wanted' poster to our target specific fax/email broadcast list, has proven to be a highly effective method for vessel recoveries and an efficient utilization of limited resources available for providing adequate investigations.

Working with the worldwide network of International Association of Marine Investigators (IAMI), insurance adjusters and special investigators, as well as our network of associates including marine surveyors and private investigators, our office has developed a nationwide network to assist in stolen boat investigations and recoveries.

stolenboats@boatman.com

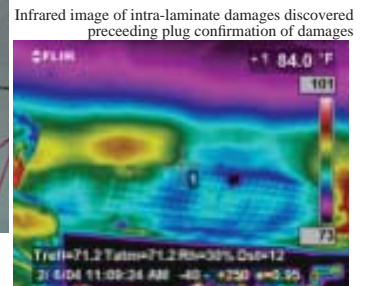
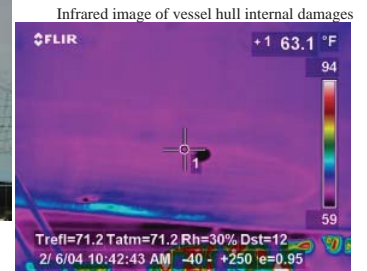
(800) 325-8061

<http://www.boatman.com>

<http://www.boatman.com>

Thermographic Inspections

In 1996 Todd & Associates recognized the advantages of utilizing Infrared Imaging in vessel non-destructive inspections, water intrusion to hull composite materials, internal structural failures and other damages are readily observable using our FLIR thermal imaging equipment. The non-destructive inspection assists in damage assessment, reduces removal repair expense, and provides technical mapping of composite materials. Having completed over 750 marine composite thermal inspections, and with over 16 years experience Todd & Associates, Inc. has become the leading expert in marine infrared thermography.



Animation/Microscopy/Accident Reconstruction

Vessel Accident Animation and Point Cloud Modeling are now available through our office. Modeling of specific vessels for utilization in vessel accident animation are additional tools offered to assist in vessel accident reconstruction. The office now has the ability to provide accurate marine accident reconstruction utilizing computer generated animation.

Marine Surveyors, Investigators & Claims Settling Agents

Todd & Associates, Inc.

2390 Shelter Island Drive Suite 220
San Diego, CA 92106

For Immediate Release

November 2016

San Diego, CA – In response to the Stolen Vessel epidemic, Todd & Associates has expanded our offered services to maintain a high degree of technology, and offers an expanded email stolen vessel notice. Email notice of stolen vessel fliers, in conjunction with our proven successful stolen vessel simultaneous broadcast facsimile system, allows Smart Phone users to now receive color photos of our stolen vessel fliers as soon as released.

Todd & Associates maintains the largest online stolen vessel database on the Internet and works in conjunction with law enforcement and insurance companies to track stolen boats until recovered. Over the past 22 years, the fax broadcast/Internet posting of stolen boats has averaged a 52% recovery rate.

Todd & Associates, Inc. is a San Diego based Marine Survey and Insurance Investigation Company which Todd Schwede founded in 1992, and provides nationwide and international marine inspection services and forensic support to the Marine Insurance industry. Todd & Associates is committed to using leading edge technologies to help insurance companies resolve claims quickly and efficiently. Stolen boat investigations, Accident and Damage Investigation & Reconstruction, Accident Animation, Point Cloud Modeling, Litigation Support, and traditional Condition/Valuation Surveys are also provided by Todd and his network of associates.

EXTRA EXTRA Read all about it!

International Association of Marine Investigators

2011 Investigator of the Year

Todd Schwede, AMS, CMI, CPII was honored as International Association of Marine Investigators'

"Investigator of the Year" recipient.

Todd also received this prestigious award in 2002, 2005 & 2007.

Todd Schwede, AMS, CMI, CPII
Bill Trenkle, Marine Engineer, AMS, CMI
Maxwell Schwede, AMS, Level III Thermographer
Captain John Barandiaran, Marine Engineer
Captain Bill Dials, AMS, CMI (Arizona/Nevada associate)
Keith Jackson, Private Investigator

Todd & Associates, Inc.

2390 Shelter Island Drive Suite 220

San Diego, CA 92106

Voice: (619) 226-1895 - (800) 325-8061 Fax: (619) 223-8942

stolenboats@boatman.com www.boatman.com